

# BASEBALL RETURN TO PLAY PLAN

Friday, 18 June 2021

*Easing of Restrictions*

*Regional – Return to Play*

*Metro – Return to Play, No Spectators*

## VERSION 20.02

*from 18 June 2021*

Waverley  
Baseball Club



# INTRODUCTION

Baseball Victoria, our members, clubs and the wider community have all been affected by COVID-19. The health, wellbeing and safety of all involved in our sport is paramount, as such Baseball Victoria will continue to work closely with the relevant health authorities, both at a national and state level, to ensure we successfully navigate our way to safely resuming activity and play for baseball in Victoria.

“Victoria has once again come together to navigate challenging COVID circumstances and keep each other safe. We are pleased to see the easing of restrictions and get back to our beloved baseball, and we look forward to a safe and successful return to activity and play. We understand how disappointing it can be to have our routine and favourite sporting activities interrupted, and we appreciate everyone's patience and understanding as we keep our community safe. We thank our winter associations and club volunteers for their efforts, as we acknowledge it takes time and planning to ensure the safest sporting experience for all. We will continue to closely follow all government guidelines and restrictions to ensure the safest and brightest future for baseball in Victoria.”

President, Baseball Victoria, Meghan Mayman

# PURPOSE

The purpose of this document is to provide the Office of Sport and Recreation Victoria, Local Government and Councils and the associated government department(s) that manage venues and facilities throughout the state with a comprehensive strategy of a 'Return to Activity' and a 'Return to Play.'

All information provided is sourced from relevant national and state government departments and strictly follows the guidelines as prepared by Sport Australia in the [AIS Framework for Rebooting Sport in a COVID-19 environment](#) and the Department of Sport and Recreation Victoria. In an evolving landscape with COVID-19, the recommendations and guidelines detailed in this document will be updated regularly in line with national and state announcements.

# SUMMARY POSITION

## EASING OF RESTRICTIONS FROM FRIDAY, 18 JUNE 2021

The changes to restrictions from 11:59pm Thursday, 17 June 2021 include:

- 25km travel radius removed, allowing for travel between metropolitan Melbourne and regional Victoria.
- Masks must be worn indoors except if at home, or if an exception applies, and masks are recommended to be worn outdoors where 1.5 metres physical distancing cannot be maintained.
- Density limits increased in public settings including workplaces and restaurants.
- Community sport open for all ages both training and competition, limited to the minimum number of people required to participate in and facilitate the activity (players and coaches) and within venue limits.
- Spectators are allowed within venue limits in regional Victoria, while no spectators are allowed in metropolitan Melbourne, other than people necessary for events.

Training and competition across all age groups can return, with confirmation that winter associations can return to competition this weekend. Density limits and restrictions still apply for facilities at our diamonds and all clubs will need to meet these requirements as part of their return to play.

The Baseball Victoria website contains all COVID Update information in relation to specific lockdown requirements, the availability of the COVID Vaccine and access to COVID Information and mental health services via the COVID Resource section at [www.baseballvictoria.com.au](http://www.baseballvictoria.com.au).

## CONTENT

<i>INTRODUCTION</i>	<i>1</i>
<i>PURPOSE</i>	<i>1</i>
<i>SUMMARY POSITION</i>	<i>2</i>
<i>CONTENT</i>	<i>3</i>
<i>KEY PRINCIPLES</i>	<i>5</i>
<i>RESOURCES</i>	<i>7</i>
<i>RETURN TO SPORT ROADMAP</i>	<i>8</i>
<i>RESTRICTIONS</i>	<i>9</i>
<i>RETURN TO PLAY</i>	<i>9</i>
<i>COVIDSafe PLAN for REGIONAL VICTORIAN CLUBS</i>	<i>10</i>
<i>GENERAL REQUIREMENTS</i>	<i>14</i>
<i>INSURANCE</i>	<i>17</i>
<i>RESOURCE DOCUMENTS</i>	<i>18</i>
<i>CLUB LISTINGS</i>	<i>19</i>
<i>CLUB LISTINGS</i>	<i>20</i>

## DOCUMENT VERSIONS

DOCUMENT VERSION	APPLICABLE DATES	CHANGES
Version One	25 May 2020 – 1 June 2020	Return to Activity
Version Two	1 June 2020 – Onwards	Activity Groups from 10 to 20 athletes
Version Three – A	19 June 2020 – Onwards	Continued Activity – 20 athletes Return to Contact Training – 20 athletes, Return to Baseball – Full Competition
Version Three – B	24 June 2020	Continued Activity – 20 Athletes, Junior Return to Baseball
Version Three – C	30 June 2020	Continued Activity – 20 Athletes, Junior Return to Baseball, Lockdown Postcode Information
Version Three – D	4 July 2020	Continued Activity – 20 Athletes, Junior Return to Baseball, ADDITION - Lockdown Postcode Information – 2 additional postcodes
Version Four	9 July 2020	Melbourne Metro and Mitchell Shire Lockdown – Continued Activity in Regional Victoria
Version Five	2 August 2020	Victorian Update Restrictions, Stage 4 Melbourne, Stage 3 Regional Victoria
Version 6	15 September 2020	Metro Melbourne, Remains the SAME Regional Victoria, Step 3, Return to Junior Play and Senior Non-Contact Training in small groups
Version 7	23 September 2020	Updated to include Full Regional Victoria and Metro Melbourne RoadMap, updated specific small group training information
Version 8	18 October 2020	Updated Victorian Government Restrictions for Metro and Regional Victoria
Version 9	28 October 2020	Updated Victorian Government Restrictions for Metro and Regional Victoria – Return to Activity
Version 10	3 November 2020	Updated to include COVID Safe Plan
Version 11	8 November 2020	Changes to Restrictions, Roadmap next steps.
Version 12	22 November 2020	Additional Easing of Restrictions in to the 'Last Step' of the Government RoadMap.
Version 13	6 December 2020	Additional Easing of Restrictions for COVID Summer.
Version 14	4 February 2021	Updated restrictions, return to NYE Dated restrictions.
Version 15	5 March 2021	Update to new masks restrictions.
Version 16	17 May 2021	Updated restrictions, hot spot instructions
Version 17	27 May 2021	7 Day Lockdown
Version 18	3 June 2021	Extended Metro Lockdown Easing Regional Restrictions
Version 19	9 June 2021	Easing Restrictions for Metro Melbourne Further Easing of Restrictions for Regional Victoria
Version 19.02	10 June 2021	Update to the Easing of Restrictions, masks are required outdoors
Version 20	18 June 2021	Updated for continued easing of restrictions – play returning for metro and regional Victoria.

# KEY PRINCIPLES

In addition to the [National Principles for the Resumption of Sport and Recreation Activities](#) published by the Australian Government on 2 May 2020, Baseball Victoria is adhering to the following guidelines as part of the national family of baseball states and territories:

## 1. GOVERNMENT GUIDELINES

1. Baseball Victoria will follow any direction from the State and Federal Government and align with the [AIS Framework for Rebooting Sport](#).
2. Baseball Victoria will review activities as directed by the State Government should restrictions or guidelines be amended or updated.
3. Baseball Victoria encourages the use of the Australian Government's [COVIDSafe App](#).

## 2. GOOD HYGIENE

1. Hand hygiene facilities or products must be available to all participants and attendees. This includes access to a sink and soap for handwashing and/or hand sanitiser with over 60 percent alcohol.
2. Avoid sharing equipment or apparel.
3. Minimise catering or shared food/drink facilities.
4. Frequently touched surfaces, work areas and equipment are cleaned thoroughly.

## 3. SOCIAL DISTANCING

1. Maintain social distancing measures. In accordance with the AIS principle of *'Get in, train and get out,'* this means participants should come prepared to training and games, as well as quickly pack up and leave once their activities have finished.

2. Return to Activity will see no use of any indoor facilities, Return to Play will see restricted use of indoor facilities.
3. No mass gatherings including club or committee meetings, team meetings, on field huddles or game discussions. Baseball Victoria supports the use of video and telephone conference technology to replace face to face interaction.
4. Limits on the amount of people attending training and game play.
5. Signage will be provided by Baseball Victoria. This signage will be customisable for clubs to convey important social distancing, hygiene and cleaning protocols.

## 4. RESTRICTIONS

Under **no** circumstances should anyone with symptoms consistent with COVID-19 attend any baseball training, games or events.

This includes any fever, respiratory symptoms, shortness of breath, sore throat, cough, fatigue, or lack of sense or smell.

Under **no** circumstances should anyone attend the event if they have been:

- i. overseas in the previous 14 days; or
- ii. in contact with someone who has been overseas in the previous 14 days; or
- iii. in contact with a known COVID-19 positive case in the previous 14 days.

## 5. MONITORING

1. A COVID-19 Officer will be appointed at each club to ensure protocols are undertaken and maintained.
2. In addition to encouraging all participants to download the [COVIDSafe App](#),
  1. all participants will be required to register with SportsTG that they are attending training, including any club committee members or coaching staff;
  2. all clubs will maintain a register of attendees, including dates and times, and this information will be shared with and monitored by Baseball Victoria.

## 6. GENERAL

1. Safety of all participants and the wider community is the top priority for Baseball Victoria and underpins all decisions related to the Return to Activity and Return to Play.
2. Resumption of Baseball Victoria activities of Baseball Victoria activities should not compromise the health of individuals or the community.
3. The resumption of Baseball Victoria activities will contribute to the health, economic, social and cultural benefits of the participants and wider Victorian community.

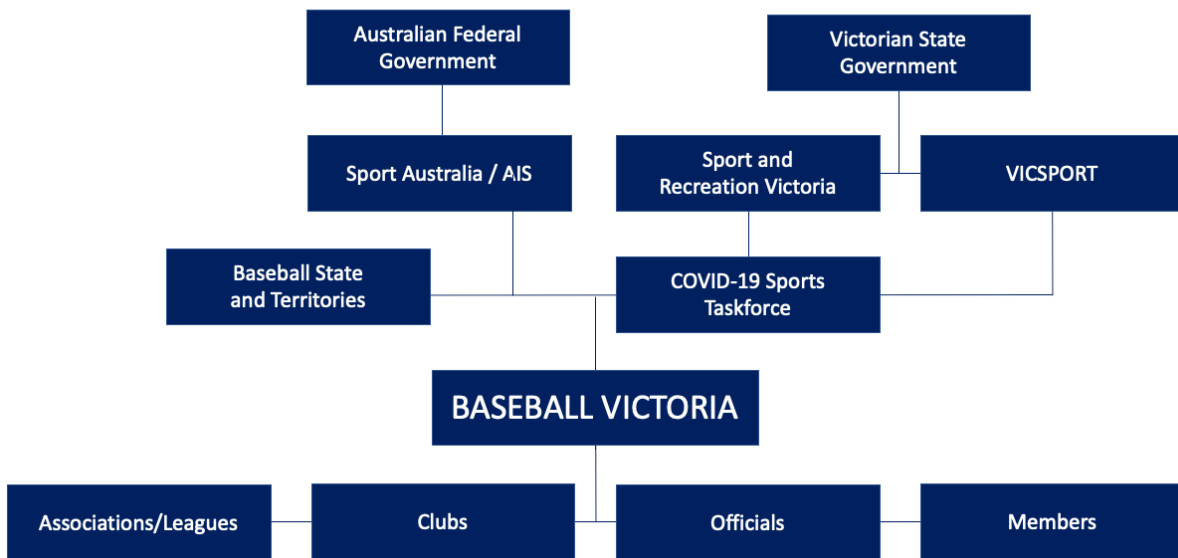


# RESOURCES

Baseball Victoria will provide links to all resource documentation on the [Baseball Victoria website](#), to be updated regularly and available to all clubs and members.

## COMMUNICATION STRUCTURE

Baseball Victoria's communication structure receives and provides information as follows:



All communication including updates to materials and roll back to together activity restrictions would be communicated directly to members via email, via the Baseball Victoria website ([www.baseballvictoria.com.au](http://www.baseballvictoria.com.au)) and via the Baseball Victoria social media channels.



# RETURN TO SPORT ROADMAP

In alignment with the Victorian Governments Roadmap to a COVID Normal, below is a sport specific summary to be considered in conjunction with the overarching public gathering, face covering and COVID hygiene requirements.

Applicable from Thursday, 10 June 2021 from 11:59PM.

CATEGORY	Regional	Metro Victoria
<b>Exercise and recreation</b>	<p><b>Physical recreation &amp; sport:</b> Open Density quotient of 1 person per 4sqm Maximum venue capacity <b>300</b> per indoor space and outdoor patron cap of <b>1000 people</b> Maximum group size: 50 people indoors</p> <p><b>Community sport</b> Open for all ages, training and competition Limited to minimum number of people required to participate in and facilitate the activity and must be within venue limits above Spectators allowed within venue limits</p>	<p><b>Physical recreation &amp; sport:</b> <b>Open</b> Density quotient of 1 person per 4sqm Maximum venue capacity 150, <b>including no more than 50 indoors</b> No venue limit if 100m distance can be maintained between groups outdoors (e.g. golf). Maximum group size: 10 people indoors, 20 outdoors</p> <p><b>Community sport</b> Open for all ages, training and competition Limited to minimum number of people required to participate in and facilitate the activity (i.e. players, coaches) and must be within venue limits above for indoor sports Spectators not allowed (excludes people necessary for events such as teachers, instructors, trainers,</p>
<b>Community facilities</b>	<p><b>Community facilities:</b> Open with a density quotient of 1 person per 4sqm Maximum venue capacity 300 people Maximum group size: 50 people</p> <p>Venues less than 600sqm can operate with lesser of density quotient of 1 person per 2 or venue cap of 150 patrons provided they have a COVID Marshal at the entrance to confirm 'green tick' check in before entry</p>	<p><b>Community facilities:</b> Open with a density quotient of 1 person per 4sqm Maximum venue capacity <b>150 people</b>, including no more than <b>75 people</b> indoors. Maximum group size: 10 people</p>

# RESTRICTIONS

From Thursday, 17 June 2021 at 11:59PM

## RETURN TO PLAY

### Currently applicable to METRO VICTORIA

Community Sport Training and competition can commence for all metro Clubs.

- Baseball is able to recommence for Training and Competition;
- Competition is able to recommence at the numbers necessary to conduct the sport, and those people on the field of play include the coaches, officials and staff;
- Spectators are not permitted.
  - A Parent or Guardian of a minor is able to attend community sport (with any necessary minor dependants), but must remain outdoors and must maintain social distance.
- One game is able to be played on each baseball diamond/field, venues with multiple fields may conduct games simultaneously, within the overall venue cap.

Click [HERE](#) for the latest restrictions update from the Victorian Premiers Office.

## RETURN TO PLAY

### Currently applicable to REGIONAL VICTORIA

From 11:59pm Thursday, 17 June 2021, regional Victoria will be able to:

- Conduct junior and senior community sport as normal.

Baseball Victoria has prepared a list of frequently asked questions, which will be regularly updated on our website [HERE](#).

# COVIDSafe PLAN for REGIONAL VICTORIAN CLUBS

Extracted from the COVIDSafe Plan has been developed to support businesses to safely reopen, maintain a COVIDSafe workplace, and prepare for a suspected or confirmed case of coronavirus (COVID-19) in the workplace.

COVID SAFE PLAN and VICTORIAN BASEBALL ARRANGEMENTS	
<b>1. Ensure physical distancing</b>	
Requirements: You must ensure volunteers and participants and spectators are 1.5m apart as much as possible.	Full Contact Training will recommence, where they may be instances where players are closer than 1.5m, however all discussions, off field activity will be conducted with social distancing where possible.
Requirements: You must apply density quotient to configure shared facilities and publicly accessible spaces to ensure that – <ul style="list-style-type: none"> <li>• There is no more than one volunteers/ participants/ spectators per four square meters of enclosed workspace</li> <li>• There is no more than one member of the public per four square meters of publicly available space indoors</li> </ul>	When facilities are available, as part of the signage package provided by Baseball Victoria, the density signage will be displayed.

<p>Requirements: You should provide training to workers on physical distancing expectations while working and socialising. This should include:</p> <ul style="list-style-type: none"> <li>• Informing volunteers/ participants/ spectators to follow current public health directions when carpooling. This can be found at vic.gov.au</li> <li>• Informing volunteers/ participants/ spectators to work from home wherever possible</li> </ul>	<p>Information on car pooling provided in this Plan to all Baseball Victoria Participants (See General Requirements).</p>
<p><b>2. Wear a face covering</b></p>	
<p>Requirements: You must ensure all workers and visitors entering the worksite wear a face covering as per public health advice. This includes –</p> <ul style="list-style-type: none"> <li>• Providing adequate face coverings and Personal Protective Equipment (PPE) to workers that do not have their own</li> </ul>	<p>All volunteers/ participants/ spectators are strongly recommended to wear masks at all time where they cannot use social distancing, aside from when on the field there is a reasonable expectation they may be required to engage in physical activity that increasing breathing to 'huffing and puffing'.</p> <p>Baseball Victoria Club have disposable masks available to volunteers/ participants/ spectators on request.</p>
<p>Requirements: You should install screens or barriers in the workspace for additional protection where relevant.</p>	<p>Applicable where necessary for canteen/food service or bar products at the requirements of the Club's COVID Plan for hospitality.</p>
<p>Requirements: You should provide training, instruction and guidance on how to correctly fit, use and dispose of PPE. You should inform volunteers/ participants/ spectators that cloth masks should be washed each day after use. However, if during the day the mask is visibly dirty or wet, the mask needs to be washed immediately.</p>	<p>Information on masks provided as part of this Plan to all volunteers/ participants/ spectators (see <a href="#">General Requirements</a>).</p>
<p><b>3. Practise good hygiene</b></p>	
<p>Requirements: You must frequently and regularly clean and disinfect shared spaces, including high-touch communal items such as doorknobs and telephones.</p>	<p>Cleaning will be conducted in accordance with local council facilities requirements.</p> <p>High touch areas outside at the facilities, i.e. benches, fence entries, or equipment is cleaned after each use.</p>

<p>You should:</p> <ul style="list-style-type: none"> <li>• Clean surfaces with appropriate cleaning products, including detergent and disinfectant</li> <li>• Replace high-touch communal items with hygienic alternatives, for example single-use or contactless options, where possible to do so</li> <li>• Clean between shifts</li> </ul>	<p>Cleaning will be conducted in accordance with local council facilities requirements.</p>
<ul style="list-style-type: none"> <li>• You should display a cleaning log in shared spaces.</li> </ul>	<p>Provided.</p>
<ul style="list-style-type: none"> <li>• You should make soap and hand sanitiser available for all volunteers/ participants/ spectators throughout the field/sporting space and encourage regular handwashing.</li> </ul>	<p>Provided as part of outdoor training, sanitation required before and after training, as well as every 20 minutes during training (see <a href="#">General Requirements</a>).</p>
<p><b>4. Keep records and act quickly if workers become unwell</b></p>	
<p>Requirements: You must enable volunteers/ participants/ spectators workers to get tested and stay home even if they only have mild symptoms.</p>	<p>Information provided as part of this Plan (see <a href="#">General Requirements</a>).</p>
<p>Requirements: You must develop a business contingency plan to manage any outbreaks. This includes –</p> <ul style="list-style-type: none"> <li>• Having a plan to respond to a volunteers/ participants/ spectators being notified they are a positive case while having participated in sport, noting volunteers/ participants/ spectators who show symptoms or have been in close contact should NOT attend the sport until they receive their test results</li> </ul>	<p>Baseball Victoria's record keeping includes contact details and options to notify all volunteers/ participants/ spectators effected by any positive case. (see <a href="#">General Requirements, Baseball Victoria Notification Structure</a>)</p>
<ul style="list-style-type: none"> <li>• Having a plan to identify and notify close contacts in the event of a positive case attending the field/sporting space during their infectious period</li> </ul>	<p>Baseball Victoria's registration and training session listings include contact details.</p>
<ul style="list-style-type: none"> <li>• Having a plan to contact DHHS and notify the actions taken, provide a copy of the risk assessment conducted and contact details of any close contacts</li> </ul>	<p>Participants via Clubs or directly are required to notify Baseball Victoria of any positive case and where it has not already been done, Baseball Victoria would immediately contact DHHS.</p>
<ul style="list-style-type: none"> <li>• Having a plan to immediately notify WorkSafe Victoria on 13 23 60 if you have identified a person with coronavirus (COVID-19) within a club or the sport overall</li> </ul>	<p>Where these are not specific workplaces, but facilities, as part of the Baseball Victoria notification structure (see <a href="#">General Requirements, Baseball Victoria Notification Structure</a>)</p>
<ul style="list-style-type: none"> <li>• Having a plan in the event that you have been instructed to cease activity by DHHS</li> </ul>	<p>Baseball Victoria is able to cease activity as required and notify participants.</p>

<ul style="list-style-type: none"> <li>Having a plan to re-open the sport/club/ sports area once agreed by DHHS and notify volunteers/ participants/ spectators they can return to participation</li> </ul>	<p>Baseball Victoria is able to re-commence activity as required and notify participants.</p>
<p>Requirements: You must keep records of all people who enter participate for contact tracing.</p>	<p>Baseball Victoria has a system of registration for all training participants, coaches and volunteers. [Link to <a href="#">BV Website, Registration</a>]</p> <p>All participants at every training session are recorded [Link to <a href="#">BV Website</a>]</p> <p>All locations will be using the Secure Victoria, <a href="#">Victorian Government QR Code System</a>.</p>
<p>Requirements: You should implement a screening system that involves temperature checking upon entry into a workplace.</p>	<p>Not currently applied to outdoor training for community participation, but this practice is part of high-performance training (Melbourne Aces, Melbourne Aces Academy).</p>
<p><b>5. Avoid interactions in enclosed spaces</b></p>	
<p>Requirements: You should reduce the amount of time volunteers/ participants/ spectators are spending in enclosed spaces. This could include –</p> <ul style="list-style-type: none"> <li>Enabling working in outdoor environments</li> <li>Moving as much activity outside as possible, including serving customers, meetings, tearooms, lunchbreaks and locker rooms</li> <li>Enhancing airflow by opening windows and doors</li> <li>Optimising fresh air flow in air conditioning systems</li> </ul>	<p>Consideration given to where this is possible.</p> <p>Baseball Victoria continues to provide online meeting options.</p>
<p><b>6. Create workforce bubbles</b></p>	
<p>Requirements: You should keep groups of volunteers/ participants/ spectators rostered on the same shifts at a single worksite and ensure there is no overlap of volunteer/ participant/ spectator occurs during shift changes.</p>	<p>This will form part of hospitality COVID Plans.</p>
<p>Requirements: Maintain records of all volunteers/ participants/ spectators who have disclosed that they reside with another volunteer/ participant/ spectator and ensure that there is no cross-over between shifts.</p>	<p>This will form part of hospitality COVID Plans.</p>

# GENERAL REQUIREMENTS

## HYGIENE

The following general hygiene practices for players and officials always apply, in line with government advice:

- Wash your hands often with soap and water for at least 20 seconds.
- Wash or sanitise your hands before eating (all players and officials should have personal hand sanitiser).
- If soap and water are not available, use an alcohol-based hand sanitiser.
- Avoid touching your eyes, nose and mouth.
- Avoid close contact with people who are sick.
- Cover your mouth to cough or sneeze (using your elbow).
- No sharing of towels/water bottles/food, including lolly or fruit bowls.
- Any areas (meeting rooms, treatment rooms, change rooms etc) accessed by players and officials to be comprehensively cleaned and sanitised after each use.
- Clubs to take steps to adequately clean and disinfect player facilities (once available) before and after use.
- Clubs must do all they can to reinforce the above precautions, including making appropriate hand washing facilities available, as well as the provision of alcohol-based hand sanitiser and tissues.
- Medical officials must follow protocols as outlined in infection control training (ie: disposal of gloves in between treatments, wearing of face masks).

## ADDITIONAL GAME & TRAINING HYGIENE

- Alcohol-based hand sanitisers must be available in the dugout.
- Spitting and clearing of nasal/respiratory secretions on diamonds or other sport settings is not permitted.
- No sharing of headsets or computer screens/iPads, without cleaning measures in place.
- All equipment to be cleaned and disinfected prior and after sessions and games.



## TESTING

- Any advice on testing for COVID-19 will be guided by the State Government and Health officials.
- Should any member become symptomatic, they must undergo relevant testing and follow isolation procedures until the results of the test are available.
- Any other relevant testing will be implemented at the request of health professionals.

## “HOT SPOTS” aka PUBLIC EXPOSURE SITES

Where public exposure sites also known as “Hot Spots” are identified by any state, territory or the Federal Government, players and officials must follow the directions for those exposure sites and where necessary not attend baseball activity in line with those directions (to isolate, quarantine or await test results).

Listings for all exposure sites are updated and listed [HERE](#).

## NOTIFICATION OF POSITIVE TESTS

- Any member, participant or volunteer that has a reasonable expectation or whom receives a positive test, must notify their Club or Baseball Victoria, having already adhered to the Victorian Government Department of Health and Human Services requirements to report and notify any positive test results.
- Any Baseball Victoria member (participant/coach/volunteer/club) can notify Baseball Victoria of any positive test or updated COVID information via the Baseball Victoria office telephone number: (03) 9645 8000 (this telephone number is connected to Baseball Victoria seven days a week, 24 hours a day) or via email to the Baseball Victoria CEO (Link: [Baseball Victoria Contact Details](#))
- All members MUST be registered to attend training (Link: [Baseball Victoria, Return to Training Registration](#)).

## BV NOTIFICATION STRUCTURE

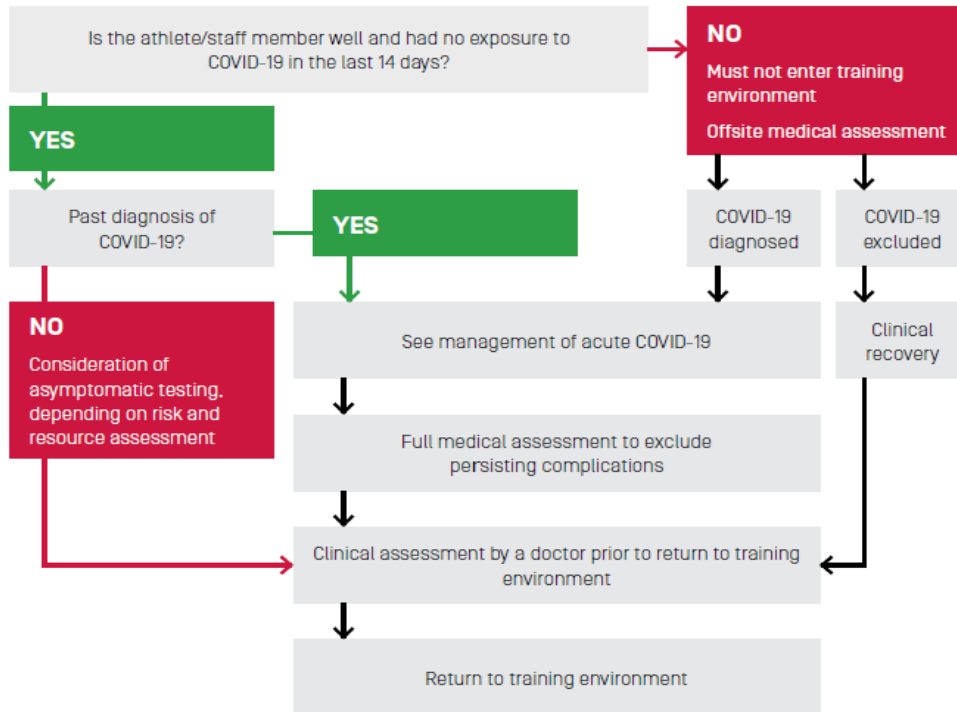
Baseball Victoria:

- Requires all participants, coaches and volunteer to register to Return to Training (Link: [Baseball Victoria, Return to Training Registration](#));
- Registration requires contact details including current address and telephone number;
- All training sessions are required to submit a list of attendees to Baseball Victoria (Link: [Baseball Victoria, Return to Training Attendance](#));
- Any Baseball Victoria member (participant/coach/volunteer) can notify Baseball Victoria of any positive test or updated COVID information via the Baseball Victoria office telephone number: (03) 9645 8000 (this telephone number is connected to Baseball Victoria seven days a week, 24 hours a day) or via email to the Baseball Victoria CEO (Link: [Baseball Victoria Contact Details](#))
- Baseball Victoria will notify – DHHS, Sport and Recreation Victoria, the Local Council where the case is reported and VICSPORT.
- Baseball Victoria will notify any effected participants via their provided contact details, via text message, via email, via the Baseball Victoria website <https://baseballvictoria.com.au/>



**RETURN TO PLAY ASSESSMENT**

- A player/official member must not join the training or playing environment if in the last 14 days they have been unwell or had contact with a known or suspected case of COVID-19.



- Any player/official member who has underlying health conditions or is considered a vulnerable person should consult with a healthcare professional prior to returning to the training or match day environment. Refer to *Vulnerable Cohorts* section below.

**OFFICIALS – UMPIRES AND SCORERS**

Umpires, scorers and game day officials will follow the same protocols as players detailed in the Return to Activity when competition resumes. Baseball Victoria will be working with the Baseball Umpires Association of Victoria to ensure umpires are ready to commence a Return to Play.

**VULNERABLE COHORTS**

Based on currently available information and clinical expertise, older adults and people of any age who have serious underlying medical conditions might be at higher risk for severe illness from COVID-19. As part of the Return to Activity with training in small groups, there will be limited coach interaction and no officials (umpires or scorers) permitted to be present. For the Return to Play, any person who is over 65 years of age or with underlying medical conditions would be required to continue to follow current social distancing requirements, and when needed, additional measures will be put into place to ensure those distancing requirements can be achieved.

## SANCTIONS

If clubs are either warned or fined by Police for breaking an enforceable direction, Baseball Victoria will follow the process under the [Baseball Victoria By-Laws](#) and [Member Protection Policy](#). If Baseball Victoria is notified of an instance where a club is reported to have breached an enforceable direction, the matter will be reported to Victorian Police.

An individual found in breach of current restrictions may be fined \$1000 on the spot and a club/association/business may be fined \$5000 on the spot by the Victorian Police. Non-compliance is considered a breach of the [Baseball Victoria Member Protection Policy](#) and [Baseball Victoria Code of Conduct](#) and as such penalties will apply.

# INSURANCE

Baseball Victoria has provided insurance cover throughout the Winter and Summer shutdown of baseball activity.

Australian Baseball's insurance is provided via a national scheme with Baseball Australia, and each of the states and territories.

Baseball Insurance cover includes:

- Public & Products Liability
- Professional Indemnity
- Personal Accident
- Property & Equipment
- Management Liability (Directors & Officers Liability)
- Travel Insurance
- Cyber Liability and Privacy Protection

Copies of all Baseball Victoria/Baseball Australia Policy statements can be accessed [HERE](#).

Certificates of Currency for any baseball club can be accessed [HERE](#).



# RESOURCE DOCUMENTS

- [AIS Framework for Rebooting Sport in a COVID-19 environment](#)
- [National Principles for the Resumption of Sport and Recreation Activities](#)
- [Baseball Victoria Website – COVID-19 Updates](#)
- [Baseball Victoria Website – Frequently Asked Questions](#)
- [Baseball Victoria Website – COVID-19 Club Documents](#)
- [Baseball Victoria Website – COVID- 19 Club Checklist](#)
- [Baseball Victoria Website – COVID-19 Club Signage](#)
- [Baseball Victorian Insurance – Certificates of Currency](#)
- [Australian Government COVID-19 Information](#)
- [COVIDSafe App](#)
- [Victorian Government COVID-19 Information](#)
- [Coronavirus.vic.gov.au](#)
- [Victorian Government Department of Health and Human Services](#)



# CLUB LISTINGS

## Full Listing of Clubs – Alphabetically

Alfredton	Footscray	North Western Titans
Bacchus Marsh	Forest Hill	Northcote
Ballarat Royals	Frankston	Ormond Glenhuntly
Bellarine	Geelong	Pakenham
Benalla	Glen Iris	Pivot City
Bendigo East	Greenhills Montmorency	Porepunkah
Berwick City	Greensborough	Port Melbourne
Berwick Dodgers	Guild All-Stars	Preston
Blackburn	Hawks	Research Lower Plenty
Bonbeach	Heathmont	Ringwood
Boneo Braves	Knox	Saints (Mildura)
Bundoora	La Trobe Uni	Sale
Chelsea	Lara	Sandringham
Cheltenham	Malmsbury	Scots
Cheltenham (Winter)	Malvern	South East Warriors
Churchill	Melbourne	Springvale
Colac	Melbourne Uni	St Kilda
Corio	Mitchell Majors	Strathfieldsaye
Croydon	Moe/Newborough	Sunshine
Dandenong	Monash University	Traralgon
Deakin	Moorabbin	Upwey Ferntree Gully
Diamond Creek	Mordialloc	Wanderers
Dingley	Mornington	Wangaratta
Doncaster	Morwell	Watsonia
Eagles (Mildura)	Mulgrave	Waverley
East Belmont Saints	NASC Bears	Werribee
Essendon	Newport	Westgarth
Falcons	North Balwyn	Williamstown
Fitzroy	North Coburg Rebels	Wodonga

# CLUB LISTINGS

Regional Victoria, including Suburb and LGA

CLUB	SUBURB	LGA
Alfredton	Lake Wendouree	Ballarat
Bacchus Marsh	Bacchus Marsh	Moorabool
Ballarat Royals	Wendouree	Ballarat
Bellarine	Wallington	Greater Geelong
Benalla	Benalla	Benalla
Bendigo East	Quarry Hill	Greater Bendigo
Churchill	Churchill	Latrobe
Colac	Colac	Colac Otway
Corio	Corio	Greater Geelong
Deakin	Waurm Ponds	Greater Geelong
Eagles (Mildura)	Mildura	Mildura
East Belmont Saints	Grovedale	Greater Geelong
Falcons	Eaglehawk	Greater Bendigo
Geelong	Grovedale	Greater Geelong
Guild All-Stars	Grovedale	Greater Geelong
Hawks	Mildura	Mildura
Lara	Lara	Greater Geelong
Malmsbury	Malmsbury	Greater Bendigo
Moe/Newborough	Moe	Latrobe
Morwell	Morwell	Latrobe
NASC Bears	Lavington	Albury City
Porepunkah	Porepunkah	Alpine
Saints (Mildura)	Merbein	Mildura
Sale	Sale	Wellington
Scots	Eaglehawk	Greater Bendigo
Strathfieldsaye	Strathfieldsaye	Greater Bendigo
Traralgon	Traralgon	Latrobe
Wanderers	Mildura	Mildura
Wangaratta	Wangaratta	Wangaratta
Wodonga	Wodonga	Wodonga

**If you have any questions concerning your Certificate of Currency, please contact V-Insurance Group on  
1300 945 547 or email [sports@vinsurancegroup.com](mailto:sports@vinsurancegroup.com)**

### Certificate of Currency

This document certifies that the policy referred to below is currently intended to remaining force until 4:00pm on the expiry date shown and will remain in force until that date, unless the policy is cancelled, lapsed, varied or otherwise altered in accordance with the relevant policy conditions or the provisions of the 'Insurance Contracts Act 1984'.

Insurer: Certain Underwriters at Lloyd's of London (UMR B087520Y135052)

Product Issuer: This policy is issued by ATC Insurance Solutions Pty. Ltd. (ACN 121 360 978, AFS Licence No. 305802) acting on behalf of Certain Underwriters at Lloyd's of London.

Insured: Australian Baseball Federation; Australian Baseball League; Tee-Ball Association of WA; and all affiliated State / Territory and Regional Associations and all affiliated clubs.

State Association: Baseball Victoria

Affiliated Association/Club:

Policy No. ATCSL00400

Class of Insurance: Combined Liability Insurance

Policy Wording: Combined Liability Insurance Policy Wording WRD112 v1.1

Period of Insurance: 31<sup>st</sup> August 2020 at 4:00 pm to 31<sup>st</sup> August 2021 at 4:00pm

Business Activities: Principally the Australian Baseball Federation coordinates, administers and assists in the development of Baseball from grassroots to the elite level throughout Australia and any other activity incidental thereto.

Limit of Liability: Professional Indemnity \$5,000,000 each and every occurrence and in the aggregate  
Public \$20,000,000 each and every occurrence  
Products \$20,000,000 each and every occurrence and in the aggregate

Policy Territory: Worldwide



Signature: \_\_\_\_\_  
Tim Martin

Date: 1/09/2020

**IMPORTANT:** In arranging this certificate, we are acting under an authority given to us by the insurer named above to issue certificates on their behalf. It does not reflect in detail the policy terms or conditions and merely provides a very brief summary of the insurance that is, to the best of our know knowledge, in existence at the date we have issued this certificate. If you wish to obtain details of the policy terms, conditions, restrictions, exclusions or warranties, you must refer to the policy contract.

**DISCLAIMER:** In arranging this certificate, we do not guarantee that the insurance outlined will continue to remain in force for the period referred to as the policy may be cancelled or altered by either party to the contract at any time in accordance with the terms and conditions of the policy or in accordance with the terms of the 'Insurance Contracts Act 1984'. We accept no responsibility or liability to advise any party who may be relying on this certificate of such an alteration to or cancellation of the policy of insurance.